

Customer: _____

PO #: _____

Job Name: _____

Quote#: _____

Date: _____

Quantity: _____

Ship To: _____

Standard Features

- Three-piece unit
- 2" Threshold
- AcrylX™ applied acrylic
- Slip-resistant floor

Interior Dimensions: 58" W x 30" D x 80" H

Exterior Dimensions: 60" W x 31" D x 81 ½" H

Skirt Height: 2"

Weight: 260 lbs

Wall Finish: Smooth

Drain Location: Center

Material: AcrylX™

Notes: _____

CONFIGURATION (handed by seat)

☐ Fully Configured Seat Location: ☐ Left-Handed Seat ☐ Right-Handed Seat

Includes: One stainless steel soap dish; Symmons® pressure balance mixing valve with concealed check stops; Moen® hand held shower head with hose and stainless steel slide bar/grab bar; a collapsible water dam; 2" drain; tension rod; one stainless steel corner bar; white Naugahyde folding wheelchair transfer seat (specify left or right hand).

CUSTOM OPTIONS (Not Available if Fully Configured Option is selected)

Seat: ☐ Left-Handed Phenolic Seat ☐ Right-Handed Phenolic Seat

Straight Grab Bars (All Grab Bars are Stainless Steel unless otherwise noted):

12"(left side wall) – QTY: _____ 12"(right side wall) – QTY: _____ 16" – QTY: _____ 18" – QTY: _____

Location: _____ Location: _____ Location: _____

22" – QTY: _____ 24" – QTY: _____ 26" – QTY: _____

Location: _____ Location: _____ Location: _____

Fixture Wall: ☐ Left ☐ Right ☐ Back

☐ Hand-held shower assembly with 30" slide bar and 60" hose

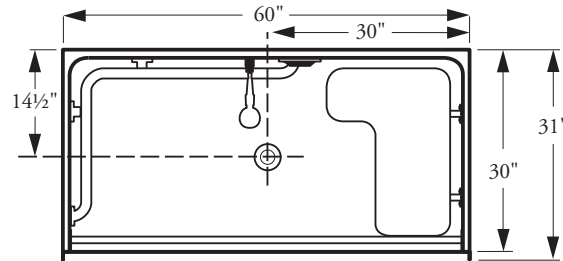
☐ Pressure balancing mixing valve

OPTIONAL ACCESSORIES

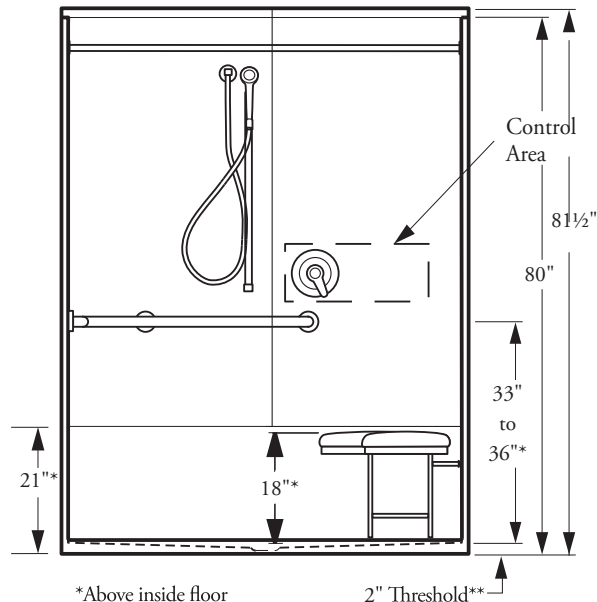
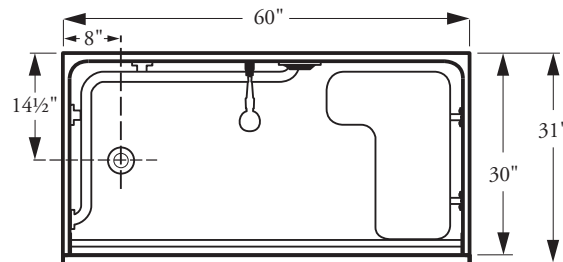
☐ Shower Curtain ☐ Curtain Rod ☐ 2" Drain ☐ Collapsible Water Dam



ANY ALTERATIONS TO ACCESSORIES SHOWN BELOW, PLEASE NOTE ON THESE DRAWINGS.



Optional: Right Hand or Left Hand Drain
(Please Specify)



*Above inside floor
**Center drain has 2" threshold
Offset drain has 7/8" threshold

2" Threshold**

Plumbing Contractor Approval: _____ Date: _____

General Contractor Approval: _____ Date: _____

Engineer Approval: _____ Date: _____

Architect Approval: _____ Date: _____